

Jolt Bar FX



Light Efficiency:

74 Lumen/Watt

Light Quality:

CRI: 92.5

Color Temperature:

9313 K

Output: 12357 lm

Peak: 3061 cd

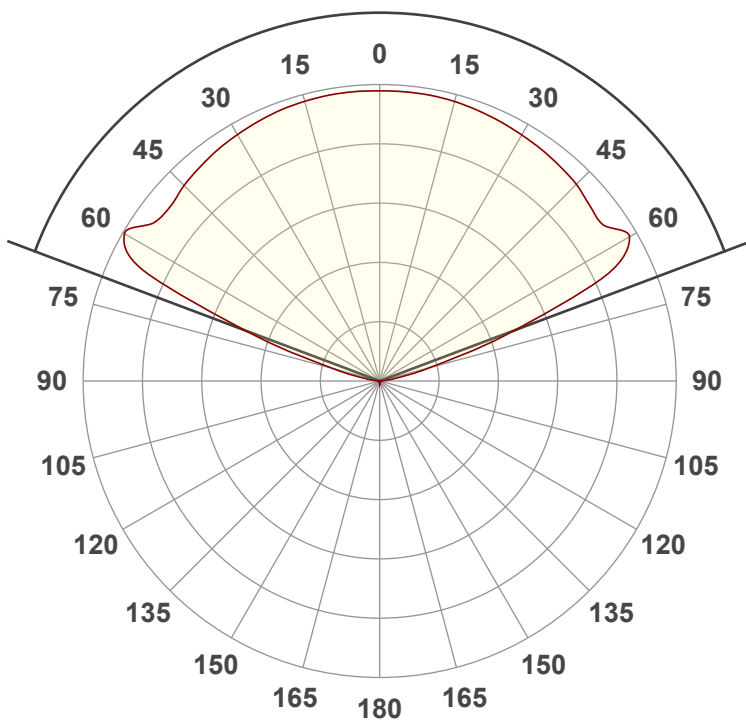
Power: 166.9 W

PF: 0.97



Beam Angle

138.8°



Test:

CRI

Date:

10/4/2022

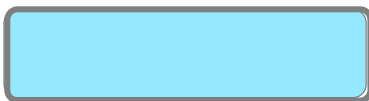
Note:

R @ 125

G @ 255

B @ 229

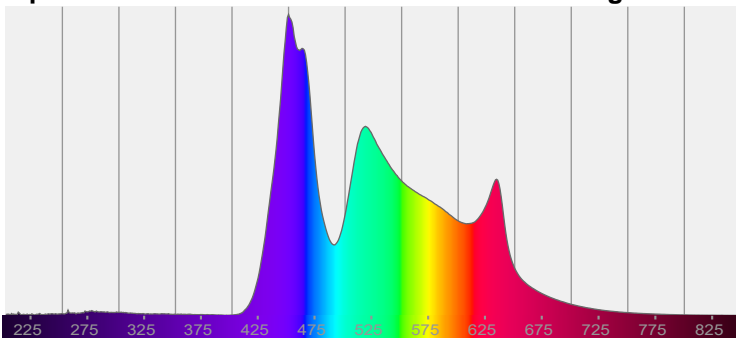
W @ 181



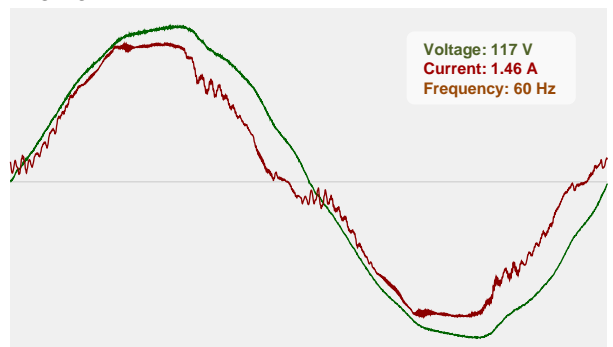
CIE 1931
x: 0.280
y: 0.303

Spectra

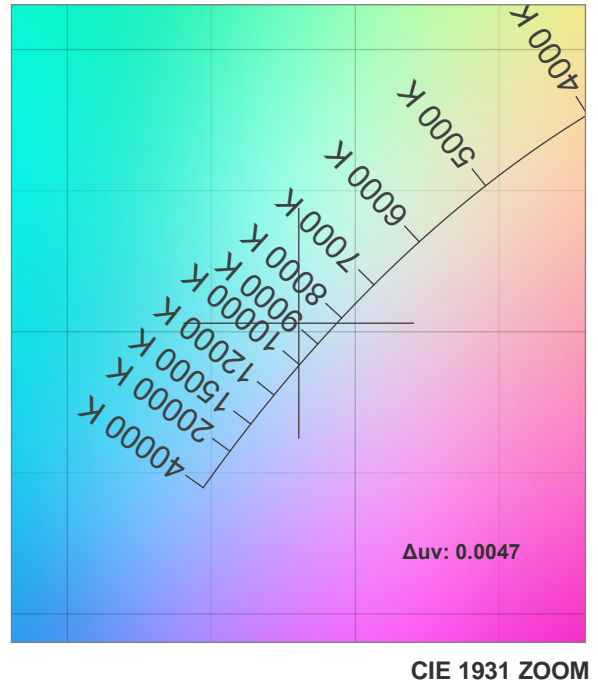
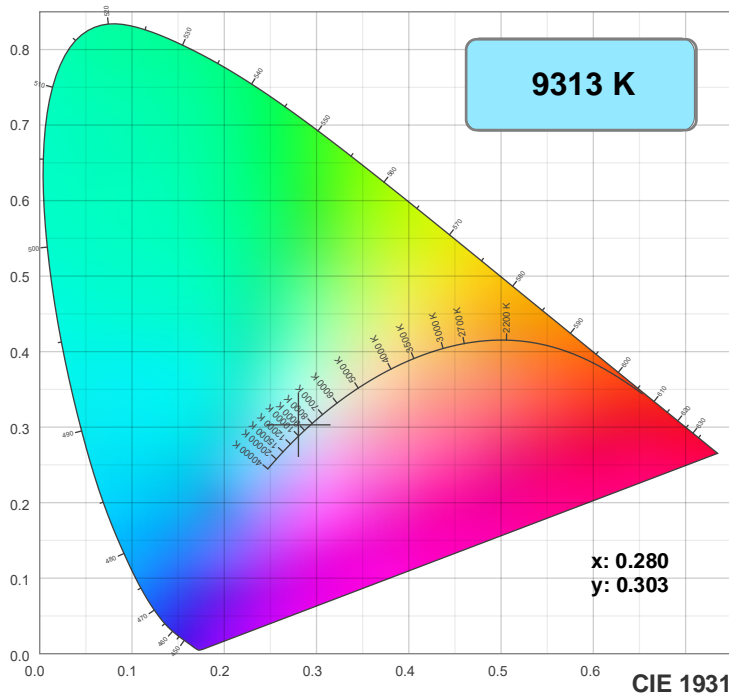
Dominant Wavelength: 481nm



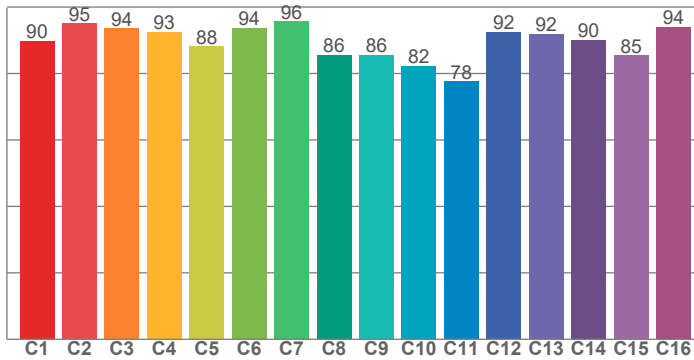
Power



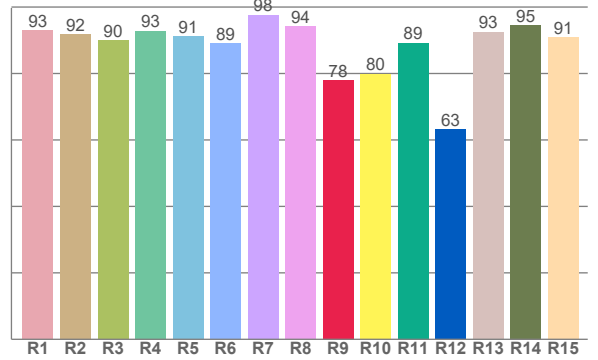
Color Details



TM30: 89.5



CRI: 92.5 (R1-R8)



CRI R values, only R1-R8 are used to calculate final CRI value

R1	R2	R3	R4	R5	R6	R7	R8	R9	R10	R11	R12	R13	R14	R15
93.0	91.9	90.0	92.9	91.2	89.1	97.7	94.2	78.1	79.9	89.2	63.1	92.5	94.5	91.0

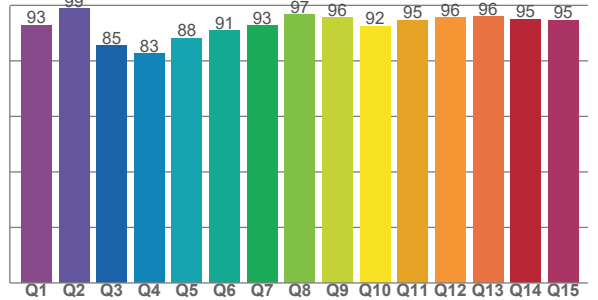
TM30 C values, 16 binned values out of total of 99 C values

C1	C2	C3	C4	C5	C6	C7	C8	C9	C10	C11	C12	C13	C14	C15	C16
89.9	95.0	93.5	92.6	88.2	93.8	95.6	85.7	85.6	82.3	77.6	92.5	92.0	90.2	85.4	94.0

CQS Q values

Q1	Q2	Q3	Q4	Q5	Q6	Q7	Q8	Q9	Q10	Q11	Q12	Q13	Q14	Q15
92.8	98.8	85.5	82.6	88.2	90.9	92.7	96.6	95.5	92.5	94.6	95.6	96.0	95.1	94.7

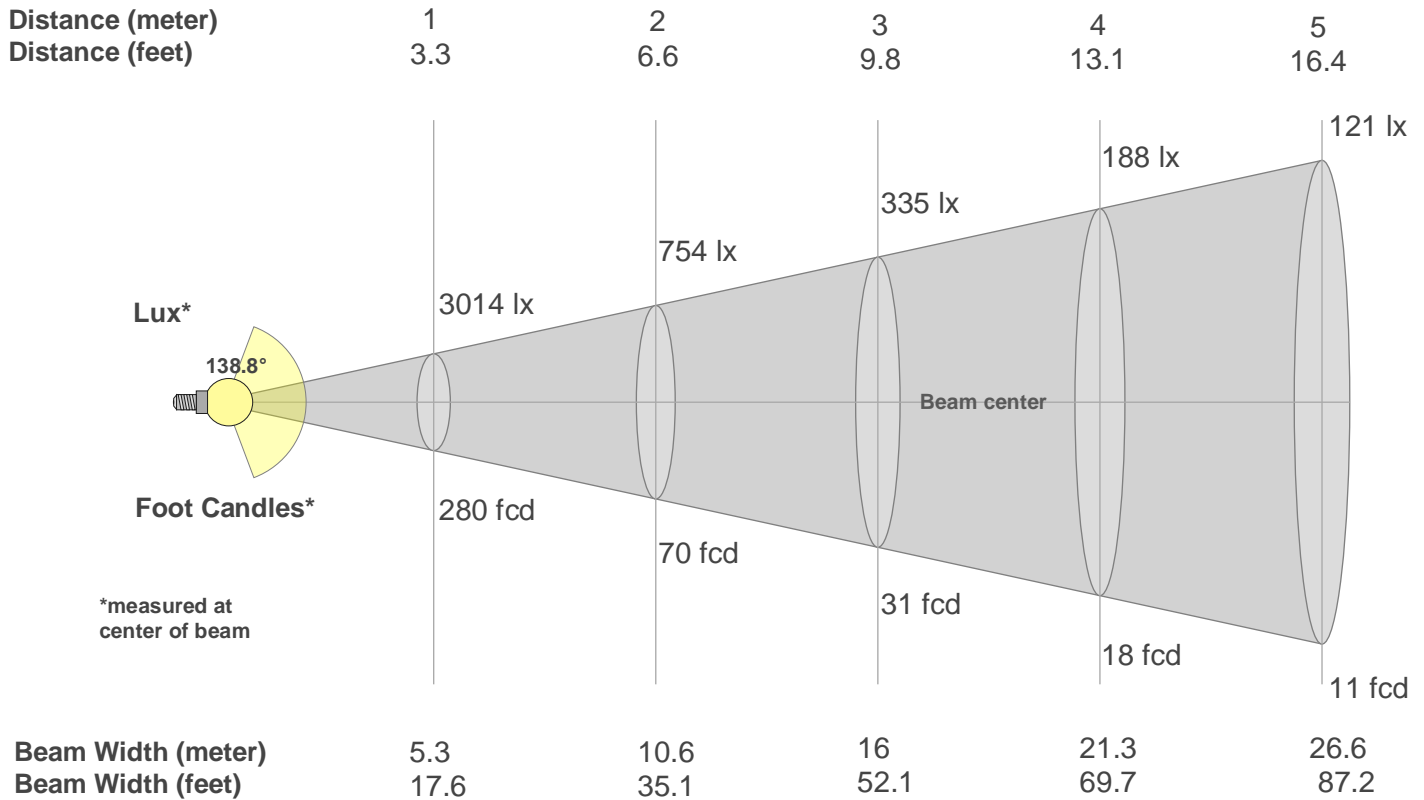
CQS: 91.6



Color Parameters

Color Temperature	Color Rendering Index	Red Component	Color Fidelity	Color Gamut	Color Quality Scale	Color Coordinate CIE 1931	Color Coordinate CIE 1931	Color Coordinate	Color Coordinate	Color Deviation from Black Body
CCT	CRI	CRI R9	TM30 Rf	TM30 Rg	CQS	x	y	u	v	Δuv
9313 K	92.5	78.1	89.5	97.7	91.6	0.280	0.303	0.185	0.299	0.0047

Beam Details



Beam Intensities from 1-20m

m	1	2	3	4	5	6	7	8	9	10	11	12	13	14	15	16	17	18	19	20
ft	3.3	6.6	9.8	13.1	16.4	19.7	23	26.2	29.5	32.8	36.1	39.4	42.7	45.9	49.2	52.5	55.8	59.1	62.3	65.6
lx	3014	754	335	188	121	84	62	47	37	30	25	21	18	15	13	12	10	9	8	8
fcd	280	70	31.1	17.5	11.2	7.8	5.7	4.4	3.5	2.8	2.3	1.9	1.7	1.4	1.2	1.1	1	0.9	0.8	0.7

Intensities in 0° C-plane

0°	5°	10°	15°	20°	25°	30°	35°	40°	45°	50°	55°	60°	65°	70°	75°	80°	85°	90°	95°
3014	3017	3015	3008	2997	2977	2955	2933	2903	2873	2832	2866	3058	2693	1372	508	157	29	0	0
100%	100%	100%	100%	99%	99%	98%	97%	96%	95%	94%	95%	101%	89%	46%	17%	5%	1%	0%	0%

Intensities in 90° C-plane

0°	5°	10°	15°	20°	25°	30°	35°	40°	45°	50°	55°	60°	65°	70°	75°	80°	85°	90°	95°
3014	3017	3015	3008	2997	2977	2955	2933	2903	2873	2832	2866	3058	2693	1372	508	157	29	0	0
100%	100%	100%	100%	99%	99%	98%	97%	96%	95%	94%	95%	101%	89%	46%	17%	5%	1%	0%	0%

Intensities in 180° C-plane

0°	5°	10°	15°	20°	25°	30°	35°	40°	45°	50°	55°	60°	65°	70°	75°	80°	85°	90°	95°
3014	3015	3014	3006	2989	2971	2951	2934	2912	2889	2844	2831	2996	2588	1385	541	177	36	1	0
100%	100%	100%	100%	99%	99%	98%	97%	97%	96%	94%	94%	99%	86%	46%	18%	6%	1%	0%	0%

Intensities in 270° C-plane

0°	5°	10°	15°	20°	25°	30°	35°	40°	45°	50°	55°	60°	65°	70°	75°	80°	85°	90°	95°
3014	3015	3014	3006	2989	2971	2951	2934	2912	2889	2844	2831	2996	2588	1385	541	177	36	1	0
100%	100%	100%	100%	99%	99%	98%	97%	97%	96%	94%	94%	99%	86%	46%	18%	6%	1%	0%	0%

Beam Angle 50%	Field Angle 10%	Cutoff Angle 2,5%	Intensity Ratio in 120° Cone	Intensity Ratio in 90° Cone
138.8°	156.1°	166.7°	74.3%	43.9%